

2 Net Court Pavilion Way, Edgware, HA8 9YP

Offers In The Region Of £270,000

CHAIN FREE

A Two Bedroom Share of Freehold Ground Floor Flat, located on the Popular Pavilion Way Development in Edgware.

Accommodation comprises a spacious reception room, kitchen, two bedrooms (One with Walk-in Wardrobe) and a Modern Bathroom Suite.

The Features of the property is it has an allocated parking space and communal gardens.

Ideal for first time buyers/investors.

Call Benjamin Stevens to arrange a viewing!

Exterior



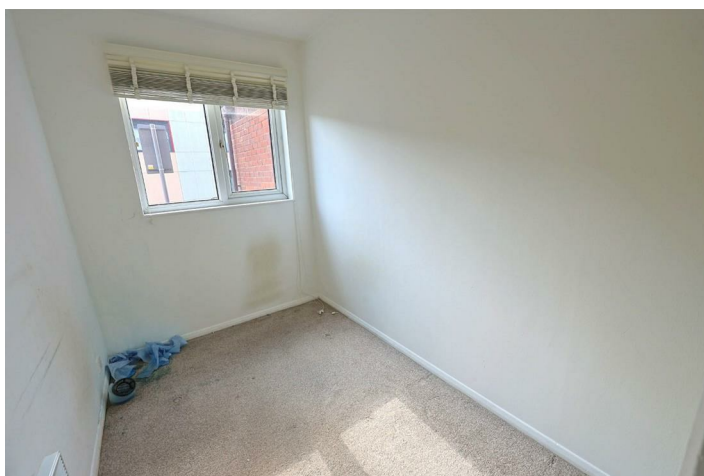
Bedroom One 11'1" x 8'6" (3.4 x 2.6)



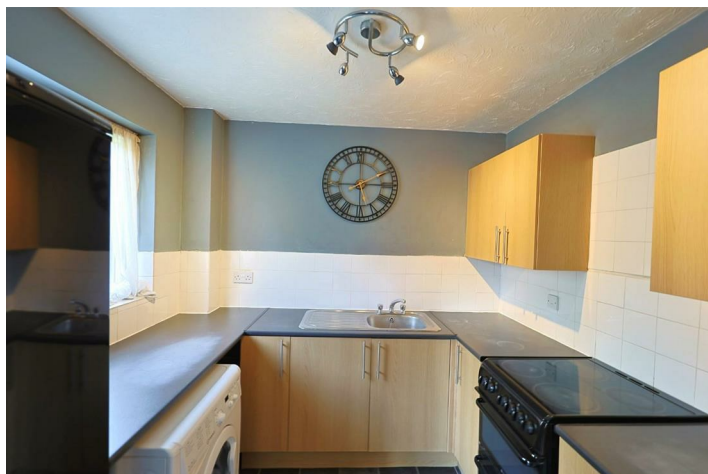
Reception 18'0" x 10'2" (5.5 x 3.1)



Bedroom Two 11'1" x 5'10" (3.4 x 1.8)



Kitchen 8'2" x 7'6" (2.5 x 2.3)



Bathroom



Communal Gardens



Tenure

SHARE OF FREEHOLD

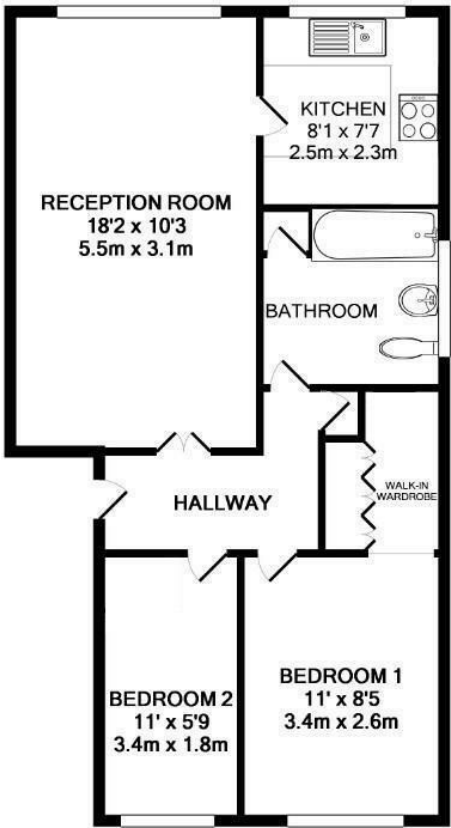
Lease- 92 years remaining

Service Charge- £1,600pa

No ground rent

Council Tax Band- D

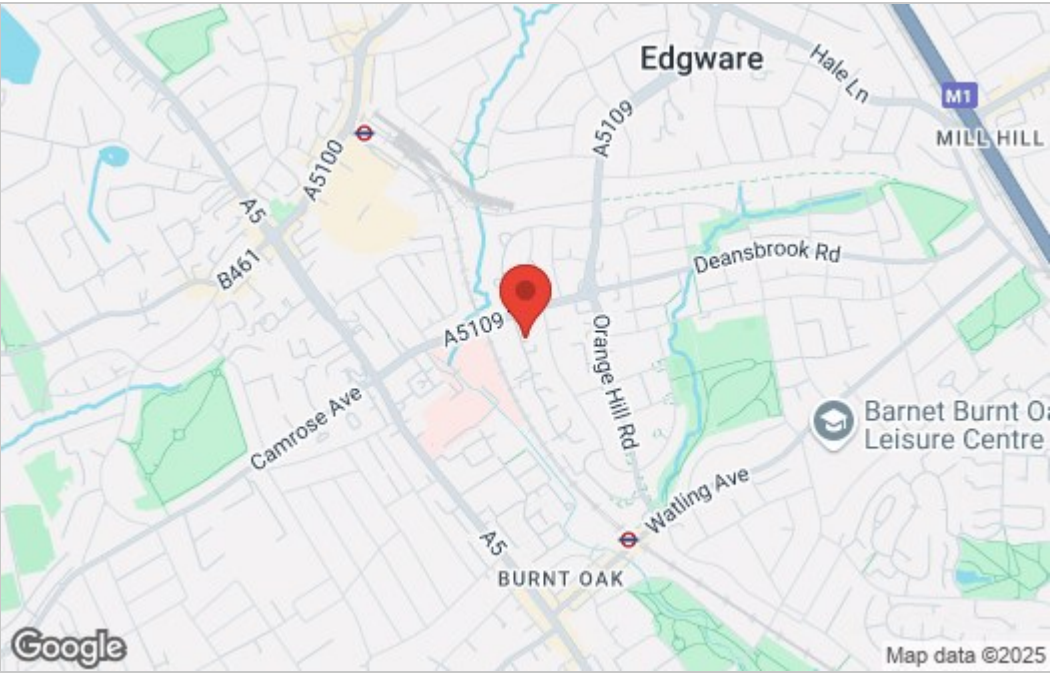
Floor Plan



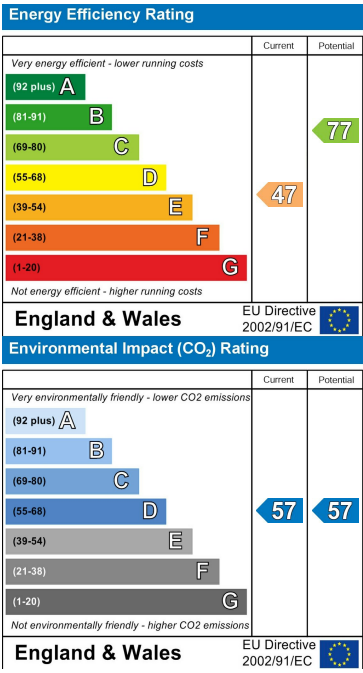
TOTAL APPROX. FLOOR AREA 542 SQ.FT. (50.3 SQ.M.)

Whilst every attempt has been made to ensure the accuracy of the floor plan contained here, measurements of doors, windows, rooms and any other items are approximate and no responsibility is taken for any error, omission, or mis-statement. This plan is for illustrative purposes only and should be used as such by any prospective purchaser. The services, systems and appliances shown have not been tested and no guarantee as to their operability or efficiency can be given
Made with Metropix ©2014

Area Map



Energy Efficiency Graph



These particulars, whilst believed to be accurate are set out as a general outline only for guidance and do not constitute any part of an offer or contract. Intending purchasers should not rely on them as statements of representation of fact, but must satisfy themselves by inspection or otherwise as to their accuracy. No person in this firms employment has the authority to make or give any representation or warranty in respect of the property.

